

Construction Notes:

Hull shell and foredeck from 1mm ply.

Aft deck from 2mm ply

Use only Epoxy Resin for construction. (Not Polyester)

Suggested resin is WEST

Paper Clip Mk2 - International One Meter

Arrangement

LOA = 1000mm

Scale: 1:4

LWL = 954mm

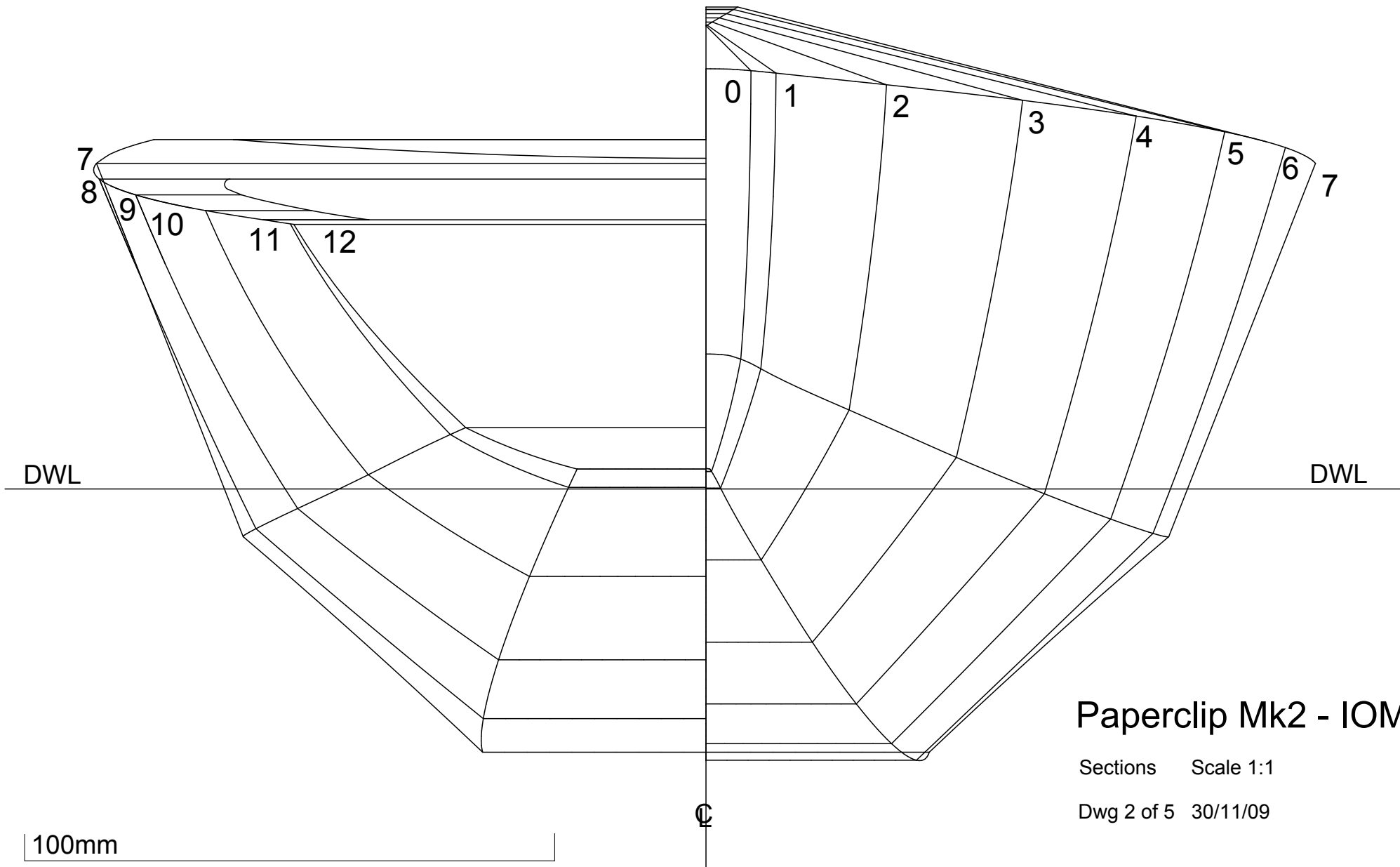
Dwg 1 of 5

BOA = 230mm

1/11/09

BWL = 182mm

Disp = 4.1kg

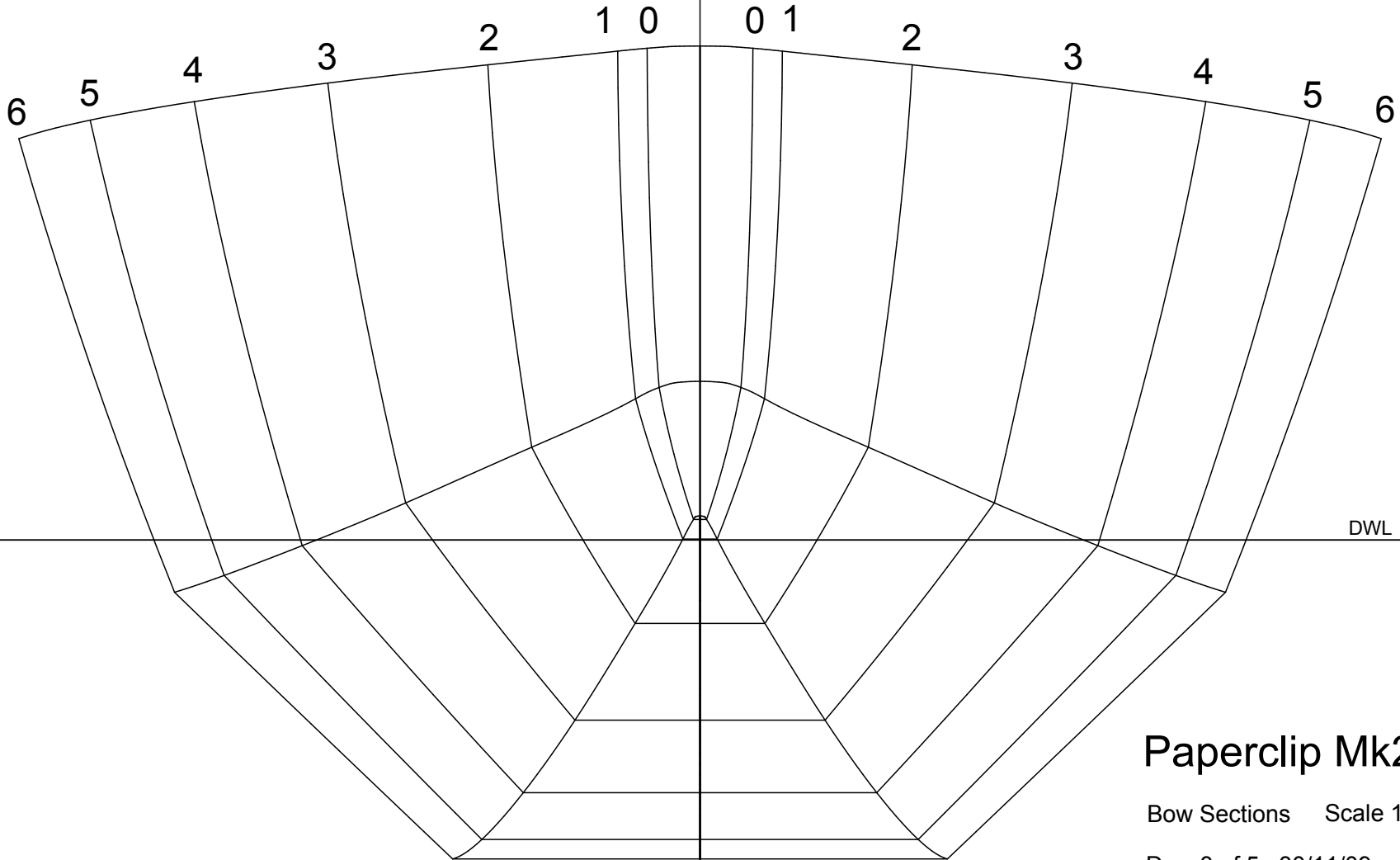


# Paperclip Mk2 - IOM

Sections Scale 1:1

Dwg 2 of 5 30/11/09

Base Line



DWL

## Paperclip Mk2 - IOM

Bow Sections Scale 1:1

Dwg 3 of 5 30/11/09

100mm

Base Line

C

7 8 9 10 11 12

12 11 10 9 8 7

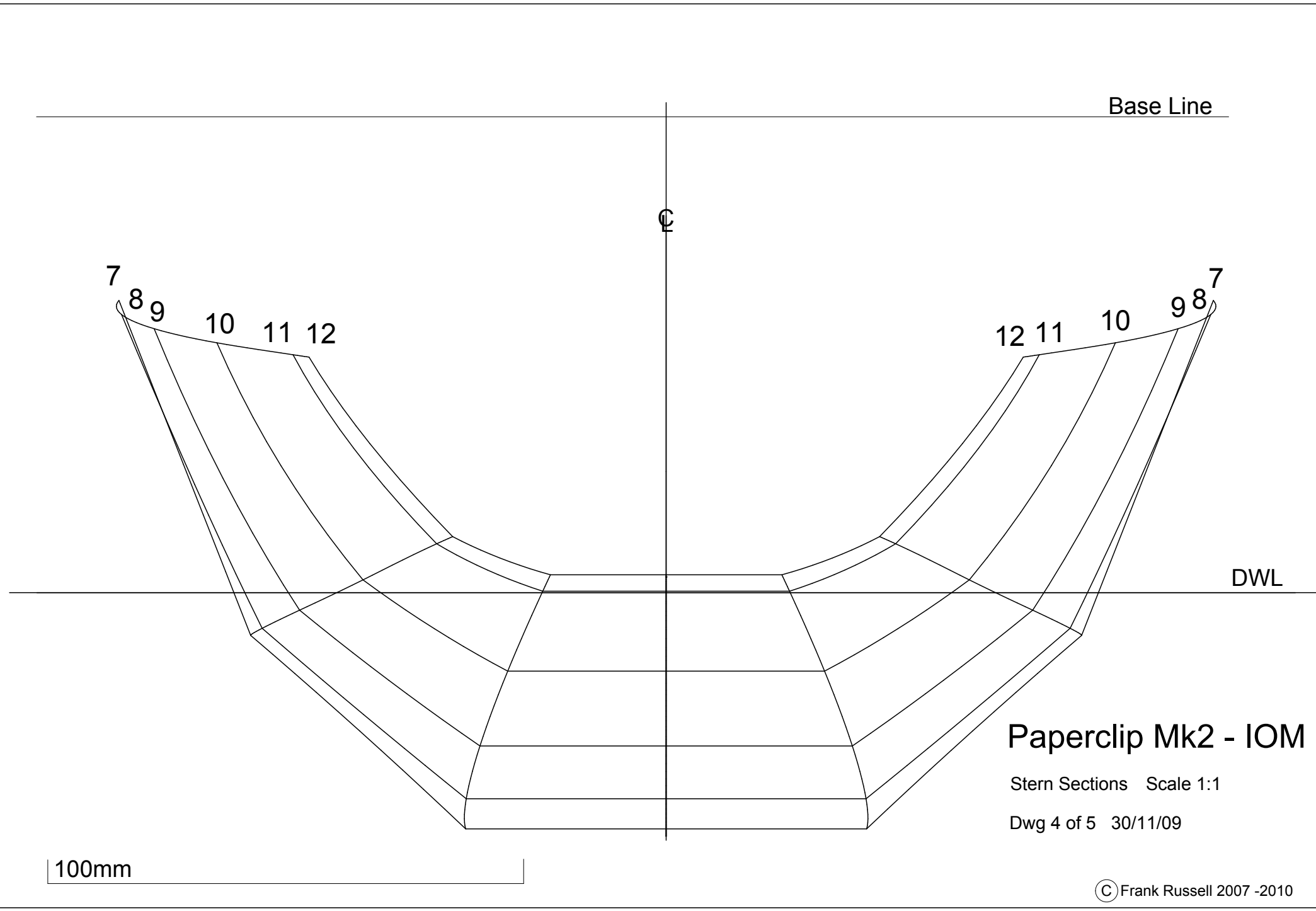
DWL

# Paperclip Mk2 - IOM

Stern Sections Scale 1:1

Dwg 4 of 5 30/11/09

100mm



Fin Bolt CL 4mm SS

Fin Top Section - Full Size

Fin Blade from Western Red Cedar  
Cover with two layers of 90g Glass  
or one layer of 90g Uni Directional  
Carbon and one layer of 90g glass

Rudder Blade from balsa  
with one layer of 90g glass  
over in Epoxy Resin

320 mm

Rudder Shaft Center Line  
Shaft from 4mm SS

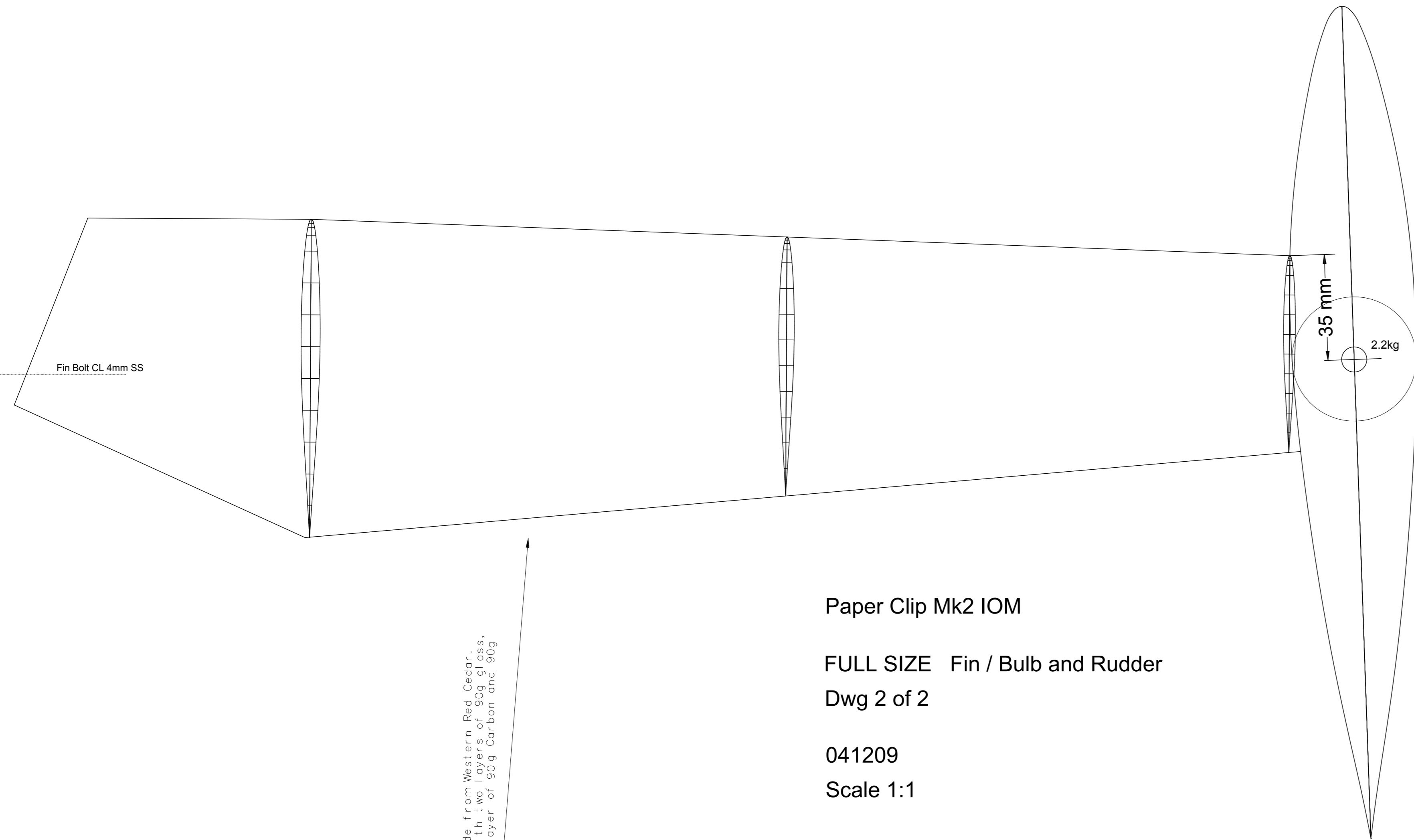
# Paperclip Mk2 - IOM

Appendages Scale 1:1 unless noted

Dwg 5 of 5 041209

35 mm

2.2kg

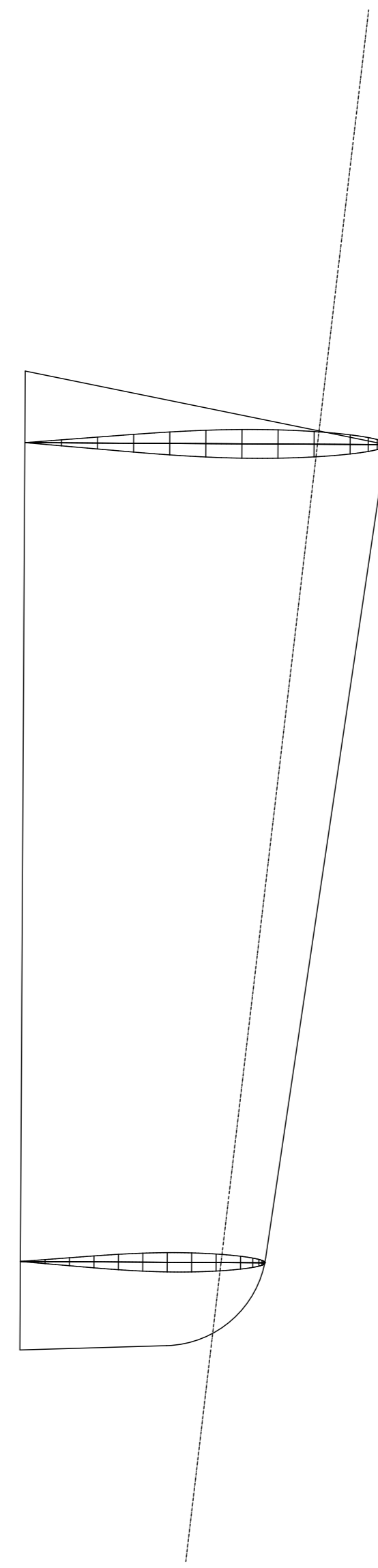


Fin Bolt CL 4mm SS

35 mm  
2.2kg

Fin blade from Western Red Cedar.  
Cover with two layers of 90g glass,  
or one layer of 90g Carbon and 90g  
glass.

Paper Clip Mk2 IOM  
FULL SIZE Fin / Bulb and Rudder  
Dwg 2 of 2  
041209  
Scale 1:1

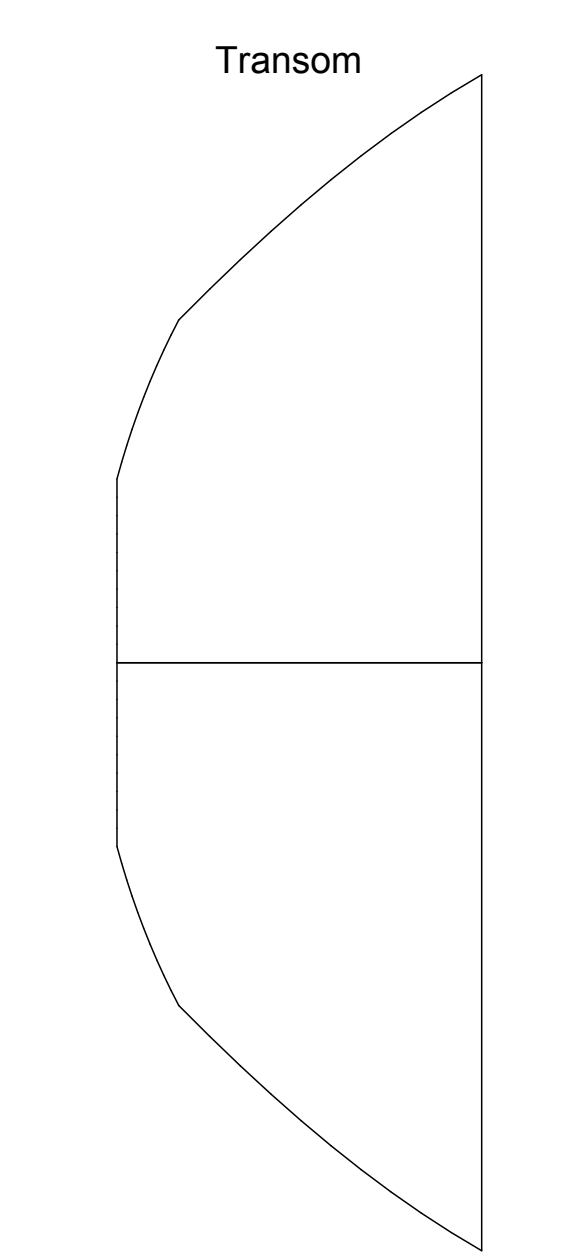
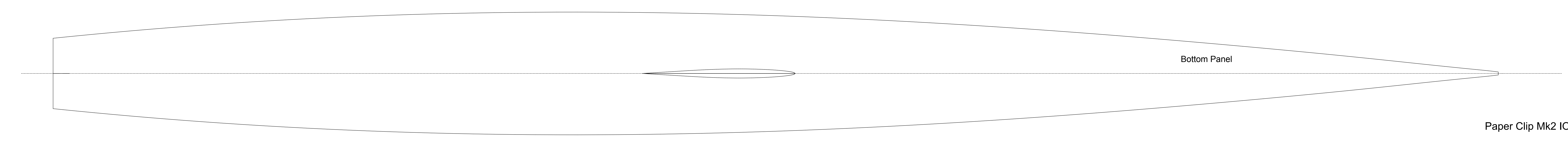
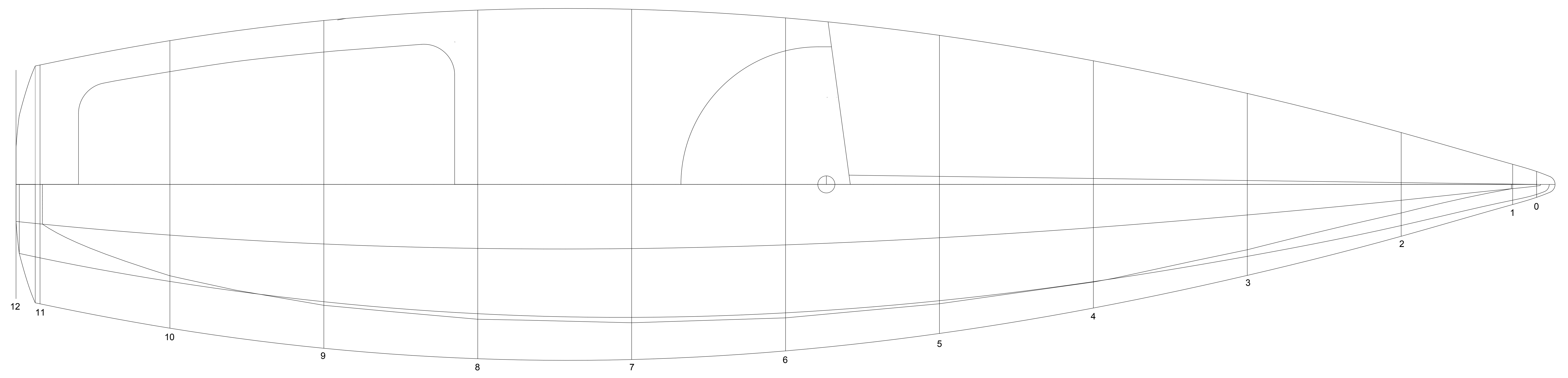
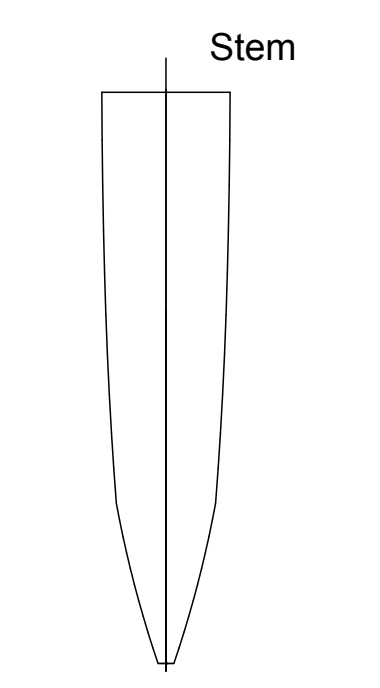


Rudder blade from balsa  
with one layer of 90g  
glass over in epoxy resin.

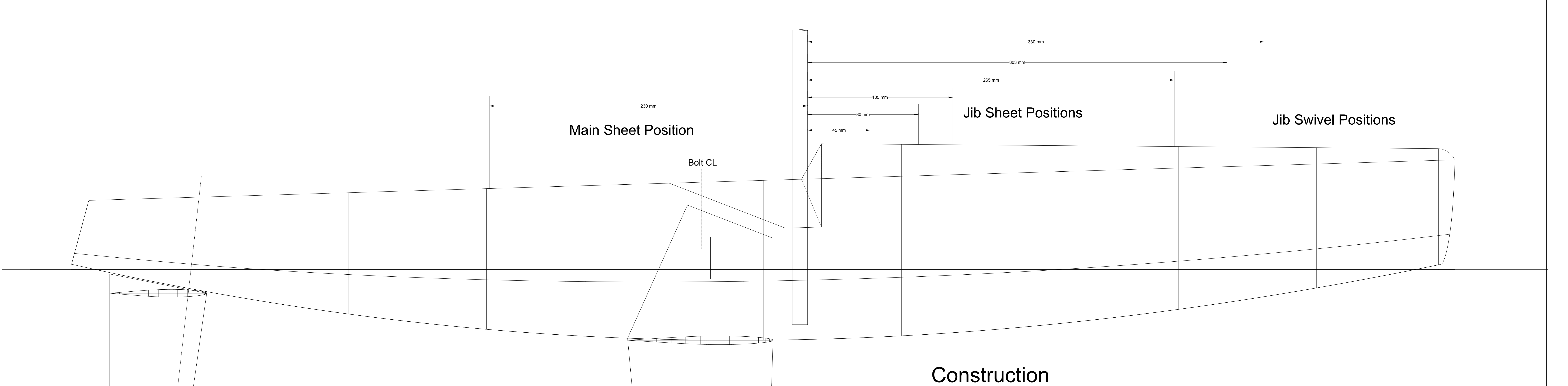
NOTES:  
\* The weight of the fin and ballast  
must be between 2.2kg and 2.5kg.  
\* The fin/bulb must be removeable  
for checking.  
\* The rudder and shaft must be no  
heavier than 75g.



NOTES:  
Trace panel onto plywood by placing carbon paper between the drawing and plywood. Mark with a pencil and straight edge in short segments.



Paper Clip Mk2 IOM  
FULL SIZE Deck and Hull Panels  
Dwg 1 of 2  
030110  
Scale 1:1



Main Sheet Position

Bolt CL

Jib Sheet Positions

Jib Swivel Positions

Construction